

1) CONSTRUCTION:

CONDUCTOR: 22 AWG SOLID BARE COPPER
 INSULATION: HIGH DENSITY POLYETHYLENE, .010" NOM. WALL THICKNESS
 PAIRS: COLOR CODED SINGLES TWISTED INTO PAIRS
 CABLE: (4) TWISTED PAIRS TWISTED TOGETHER TO FORM A CABLE CORE
 JACKET: POLYVINYLCHLORIDE, (**COLOR, PER CHART 1**), .037" NOM. WALL THICKNESS

NOM. DIA.
 .0254"
 .045"
 .090"
 .193"
 .267"
 (BY PI TAPE)

2) PHYSICAL PROPERTIES:

TEMPERATURE RATING, MAX. 75°C & 80°C
 TEMPERATURE RATING, MIN. -20°C
 WT./M', NOM., NET. 36.1 LBS.
 CHART 1:

QUABBIN P/N	JACKET COLOR
5941	BLACK
5942	TEAL

3) ELECTRICAL CHARACTERISTICS:

SEE PAGE 2

4) AGENCY APPROVALS:

UL AWM 2463 (80C 600V)
 NEC (UL) TYPE PLTC
 NEC (UL) TYPE CMX OUTDOOR-CMR
 CEC C(UL) TYPE CMX OUTDOOR-CMR
 EU CE MARK: MEETS EU DIRECTIVE 2011/65/EU (RoHS II)

5) APPLICATION:

RoHS COMPLIANT MATERIALS. COMPLIES WITH FT4/IEEE 1202 BURN. COMPLIES WITH UL 1666 VERTICAL RISER BURN. COMPLIES WITH UL VW-1 BURN.

6) PRINT: (WHITE INK ON BLACK JACKET, ALL OTHERS BLACK INK)

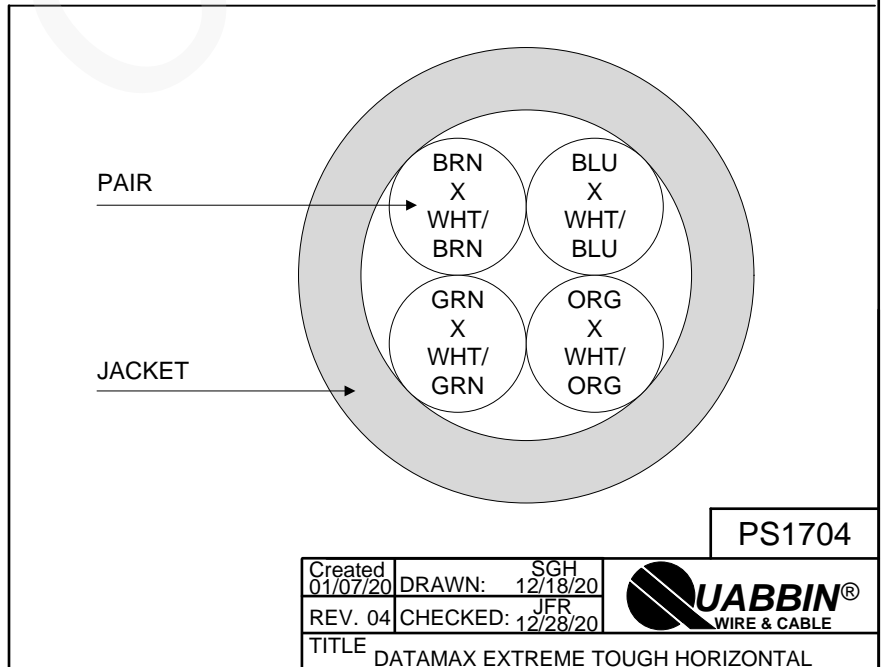
QUABBIN DATAMAX EXTREME TOUGH CAT 5E 350 MHZ U/UTP HORIZONTAL CABLE P/N (**P/N PER CHART 1**) (UL) PLTC 22 AWG 75C OIL RES I FT4 OR C(UL)US CMX OUTDOOR-CMR 75C SUN RES OR AWM 2463 80C 600V -- CAT 5e TIA-568.2-D -- CE RoHS -- (**LOT DESIGNATOR**) (**SEQUENTIAL FOOTAGE**)

7) COLOR CODE:

1. BLUE X WHITE/BLUE
2. ORANGE X WHITE/ORANGE
3. GREEN X WHITE/GREEN
4. BROWN X WHITE/BROWN

8) PUT UPS

TO BE PACKAGED AS PER QWC'S STANDARD PACKAGING



PS1704

Created 01/07/20	DRAWN: SGH 12/18/20	
REV. 04	CHECKED: JFR 12/28/20	
TITLE DATAMAX EXTREME TOUGH HORIZONTAL CABLE -- 4PR 22AWG -- STYLE 2463, TYPE PLTC, FT4, C(UL)US CMX OUTDOOR-CMR		
DRAWING#: QWC0122		1 of 2

CUSTOMER APPROVAL:

DATE:

3) ELECTRICAL CHARACTERISTICS:

CAPACITANCE, MUTUAL, NOM.	13.5 PF/FT. AT 1 MHz
DIELECTRIC WITHSTANDING, MIN.	1500V RMS
VOLTAGE RATING, MAX.	600V
D.C. RESISTANCE, MAX.	17.2 Ω /1,000'


NOTE: TESTING FOR THE FOLLOWING IS CONDUCTED OFF THE REEL. (FOR 100m of CABLE)

IMPEDANCE, NOM.	100 \pm 15 Ω 1 - 350 MHz	
RETURN LOSS	PER CHART 2	
PS NEXT	1 $\leq f \leq$ 350 MHz	32.3 – 15 LOG (f/100) dB MIN
NEXT	1 $\leq f \leq$ 350 MHz	35.3 – 15 LOG (f/100) dB MIN
PS ACRF	1 $\leq f \leq$ 350 MHz	20.8 – 20 LOG(f/100) dB MIN
ACRF	1 $\leq f \leq$ 350 MHz	23.8 – 20 LOG(f/100) dB MIN
INSERTION LOSS	PER CHART 2	
DELAY	1 $\leq f \leq$ 350 MHz	534 + 36/ \sqrt{f} ns MAX
DELAY SKEW	1 $\leq f \leq$ 350 MHz	<25 ns

CHART 2:

Frequency (MHz)	Insertion Loss, MAX. (dB/100m)	Return Loss, MIN. (dB)
1	2.0	20.0
4	4.0	23.0
8	5.7	24.5
10	6.4	25.0
16	8.1	25.0
20	9.2	25.0
25	10.3	24.3
31.25	11.6	23.6
62.5	16.8	21.5
100	21.7	20.1
155	27.7	19.0
200	32.0	19.0
250	36.4	18.0
300	40.5	18.0
310	41.3	18.0
350	44.3	17.0

PS1704

Created 01/07/20	DRAWN: SGH 12/18/20	
REV. 04	CHECKED: JFR 12/28/20	
TITLE DATAMAX EXTREME TOUGH HORIZONTAL CABLE -- 4PR 22AWG -- STYLE 2463, TYPE PLTC, FT4, C(UL)US CMX OUTDOOR-CMR		
DRAWING#: QWC0122		2 of 2

CUSTOMER APPROVAL:

DATE: